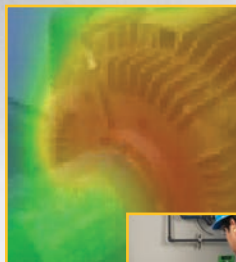
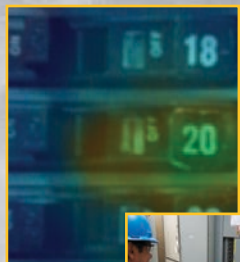


KEY APPLICATIONS

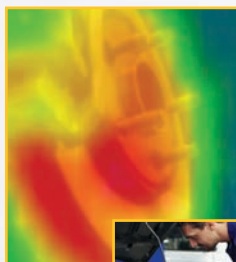
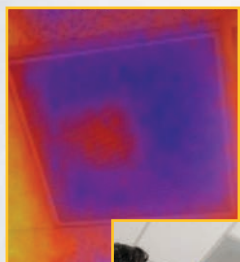


Electrical

- Electrical panels and wiring
- Fuses and insulators
- Switch gear

Industrial maintenance

- Motors, pumps, bearings and windings
- Belts and drive shafts
- Steam traps



HVAC/R

- Ducts, grills and diffusers
- Heating and cooling systems
- Bearing components
- Pipes

Automotive

- Brakes
- Condensers
- Wiring, bearings, exhaust systems and manifolds
- Hydraulics, compressors and seals

2 EXCITING MODELS

	VT02	VT04
Built-in digital camera	Yes	
Infrared heat map overlay	Yes (five blending modes)	
Image optics system	PyroBlend™ optic	PyroBlend™ Plus optic, 4 x sharper image
Center-point temperature measurement	Yes	
Field of view	20° x 20°	28° x 28°
Battery	4 AA batteries (8 hours)	Li-Ion rechargeable battery (8 hours)
Temperature alarms	—	Yes
Temperature range	-10 °C to +250 °C (14 °F to 482 °F)	
Temperature measurement accuracy	± 2 °C or ± 2 %	
Compact and focus free	Yes – no training required	
SD card (4 GB included)	Yes – 10,000 images per GB	
Professional reporting SmartView® software	Free download from Fluke website. www.fluke.com/vtsmartview	

Fluke Corporation

PO Box 9090, Everett, WA 98206 U.S.A.

Fluke Europe B.V.

PO Box 1186, 5602 BD Eindhoven, The Netherlands

For more information call:

In the U.S.A. (800) 443-5853 or Fax (425) 446-5116
 In Europe/M-East/Africa +31 (0) 40 2675 200 or Fax +31 (0) 40 2675 222
 In Canada (800)-36-FLUKE or Fax (905) 890-6866
 From other countries +1 (425) 446-5500 or Fax +1 (425) 446-5116
 Web access: <http://www.fluke.com>

©2012-2014 Fluke Corporation.
 Specifications subject to change without notice.
 Printed in U.S.A. 1/2014 6000856D_CAEN

Modification of this document is not permitted without written permission from Fluke Corporation.

FLUKE®

Visual IR Thermometers

DETECT ISSUES INSTANTLY



VT02

VT04

A troubleshooting tool with an infrared heat map



www.flukecanada.ca/beyondtemp

SEARCHING FOR TEMPERATURE ISSUES SPOT BY SPOT?

Traditional IR thermometers are designed for only one purpose — detecting single-spot temperature readings.

If you don't know exactly where to look, you can miss a serious problem or waste valuable time searching.



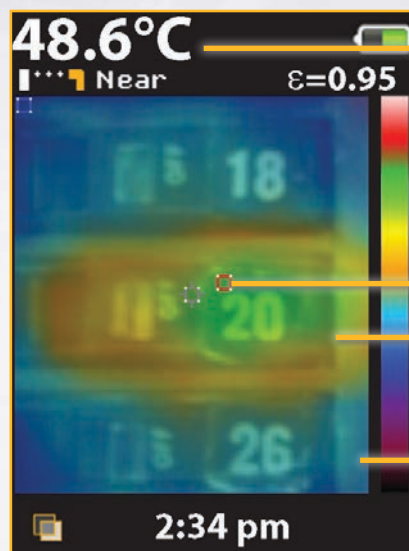
HOT AND COLD SPOTS CAN'T HIDE ANYMORE

Visual IR thermometers combine the convenience of a point and shoot IR thermometer with the visual insight of an infrared heat map so you can see the complete picture.



DESIGNED TO SEE IT ALL

Every Fluke Visual IR Thermometer has a built-in digital camera with an infrared heat map overlay to instantly identify the exact location of the problem.



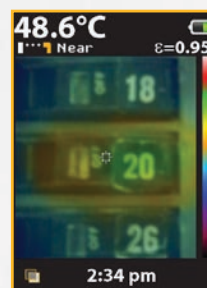
Center-point temperature (°C/°F)

Hot and cold markers

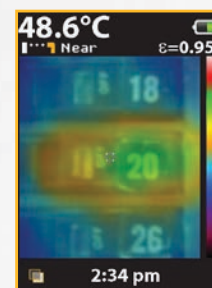
Digital image for context

Clearly see that breaker 20 is overloaded and communicate your findings.

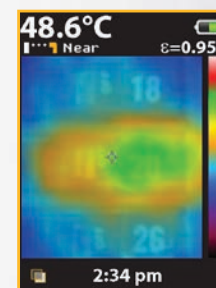
Infrared heat map overlay



25 % heat map



50 % heat map



75 % heat map

GET THE PERFECT FIT FOR YOU

- Fits in your pocket
- Fits your budget – priced to outfit your entire team
- Fits the way you work – get to work as soon as you take it out of the box

